

Press Release

Applied Geographics Marks Milestone with Launch of South Portland Maine's GIS Website

BOSTON – July 2008 – With the recent launch of the South Portland, Maine website, Applied Geographics, Inc. (AppGeo) is now hosting more than 40 GIS websites for its clients across New England. Other recent additions to AppGeo's hosting roster include: Lexington, MA; Stratford, CT; and Smithfield, RI, and the North Bristol Regional Property Map Portal, MA.

The South Portland site (<http://host.appgeo.com/southportlandme/>) offers a variety of parcel search options, as well as standard property map views and links to property record cards. Advanced geospatial features include interactive mapping with user layer control, automated property abutter identification and map mark up tools for interactively adding points, lines, polygons, and text labels to the map.

“Expanding the nation’s spatial data infrastructure at the local level is an important part of our business,” said Rich Grady, President of AppGeo. “The initial public response to South Portland has been strong with the site consistently generating over 6,000 maps per month for the benefit of both citizens and City staff.”

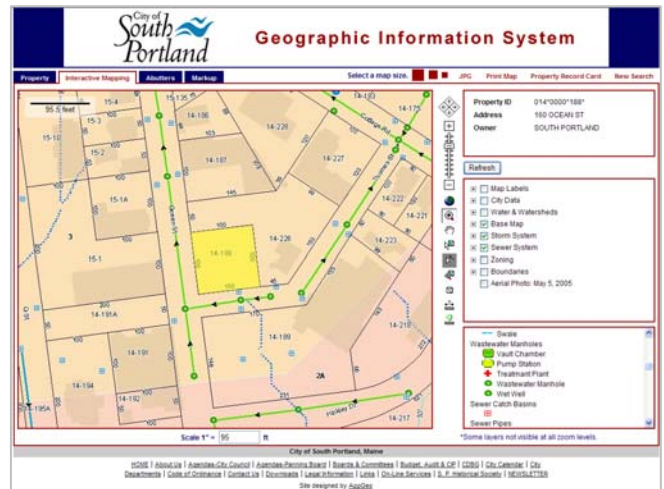
“Our goal in developing sites such as South Portland’s is to keep the interface simple while delivering rich geographic data and functionality,” said Peter Girard, Vice President and Director of Software Architecture. “We are constantly evaluating new programming techniques and software that allow us to enhance our underlying technology and create new features for our clients.”

“Third-party GIS hosting offers new opportunities for small communities as well as larger communities that don’t want the hassle of maintaining a GIS hosting infrastructure and supporting 24x7 availability,” said Michael Turner, Executive Vice President. “The growth we’ve seen in this business reflects that we’ve been able to build useful sites that get highly utilized and that our hosting infrastructure can deliver high performance and availability at a very reasonable cost.”

In addition to hosted solutions, AppGeo has created custom GIS web-sites for local, state and federal customers that are self-hosted by the customer.

About Applied Geographics, Inc.

Applied Geographics, Inc. (AppGeo, www.appgeo.com) has been providing high quality GIS services and innovative solutions to government and private sector clients since 1991. AppGeo empowers its customers to put GIS to work through the intelligent use of geographic data and applications that improve work flows and business processes. AppGeo provides a full range of GIS consulting services: GIS strategic and implementation planning, data development, custom applications, training, cartography, implementation assistance and technical support. AppGeo services are available through a variety of state



South Portland's GIS website can be reached at:
<http://host.appgeo.com/southportlandme/>

blanket contracts and nationwide through its GSA IT Schedule 70. Information on AppGeo's hosting services can be found at: <http://www.appgeo.com/Default.aspx?tabid=122>.

AppGeo Contact Information

Press Release Contact: Thomas Harrington, Jr. (Director of Marketing) tharr@appgeo.com

AppGeo Corporate Contact: Rich Grady (President) rgrady@appgeo.com

Tel: 617-447-2400 • Fax: 617-259-1688 • www.appgeo.com • info@appgeo.com

Applied Geographics and *Empowering People with Spatial Solutions* and *AppGeo* are trademarks, registered trademarks, or service marks of Applied Geographics, Inc. in the United States. Other companies and products mentioned herein are trademarks or registered trademarks of their respective trademark owners.