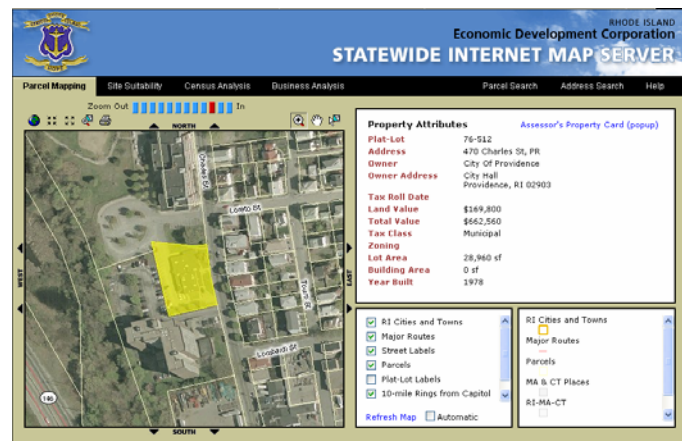


Applied Geographics Supports Rhode Island Economic Development

BOSTON – May 2006 – Working with the Rhode Island Economic Development Corporation (RI EDC) and the Providence Plan, Applied Geographics, Inc. (AppGeo) developed a custom Web-mapping application for statewide parcel-level mapping and site suitability assessment. The new Statewide Internet Map Server (http://www.riedc.com/riedc/business_services/12/443/) provides a mechanism for searching for and displaying potential development properties throughout the state.

“The site contributes to our mission of providing customized services and useful information to developers, municipalities, real estate brokers, entrepreneurs, and businesses seeking to expand or relocate in Rhode Island,” said Lori Capaldi, Director of Community Economic Development, RI EDC. “Statewide or municipal level searches by address or property characteristics, such as tax class, land or building value and size, make this an efficient system for locating properties that will help the planning and business communities.”



“This is the first statewide application with parcel-level data and analysis capabilities,” said James Lucht, Director of Information Technology at the Providence Plan, a private, non profit agency. “It puts a user-friendly GIS capability on everyone’s desktop. The site currently includes parcel data for about a third of Rhode Island cities and towns, and we look forward to the participation of all Rhode Island municipalities as data providers and beneficiaries. Public and non-profit economic development entities in the State can access specific business information on the site that is not available to the general public. Users representing these organizations can contact the EDC for a user name and password - contact information is provided on the site.”

“The site allows planners, businesses and the public to evaluate a property with respect to geography, demographics, and local business activity,” said Michael Turner, Executive Vice President of Applied Geographics. “The four tab organization of the site - Parcel Mapping, Site Suitability, Census Analysis, and Business Analysis - provides a quick and easy way to map and summarize data for a selected property and its surroundings. Businesses, large and small, gain a huge advantage and potential cost savings when they better understand the context in which they operate.”

About Applied Geographics, Inc.

Applied Geographics, Inc. (AppGeo) has been providing high quality GIS services and innovative solutions to government and private sector clients since 1991. AppGeo specializes in

the design and installation of Web-based interactive mapping and enterprise-wide information systems that are tailored to data discovery and visualization, and productivity improvement. AppGeo is an award-winning ESRI Business Partner. AppGeo services are available through a variety of state blanket contracts and nationwide through its GSA IT Schedule 70.

AppGeo Contact Information

Press Release Contact: Thomas Harrington, Jr. (Director of Marketing) tharr@appgeo.com

AppGeo Corporate Contact: Rich Grady (President) rgrady@appgeo.com

Tel: 617-259-1710 • Fax: 617-259-1688 • Web: www.appgeo.com

Applied Geographics and *Empowering People with Spatial Solutions* are registered trademarks of Applied Geographics, Inc. in the United States. Other companies and products mentioned herein are trademarks or registered trademarks of their respective trademark owners.